

2022-23

GOVERNOR'S EXECUTIVE BUDGET



HUMAN SERVICES

MEG SNEAD // ACTING SECRETARY, DEPARTMENT OF HUMAN SERVICES



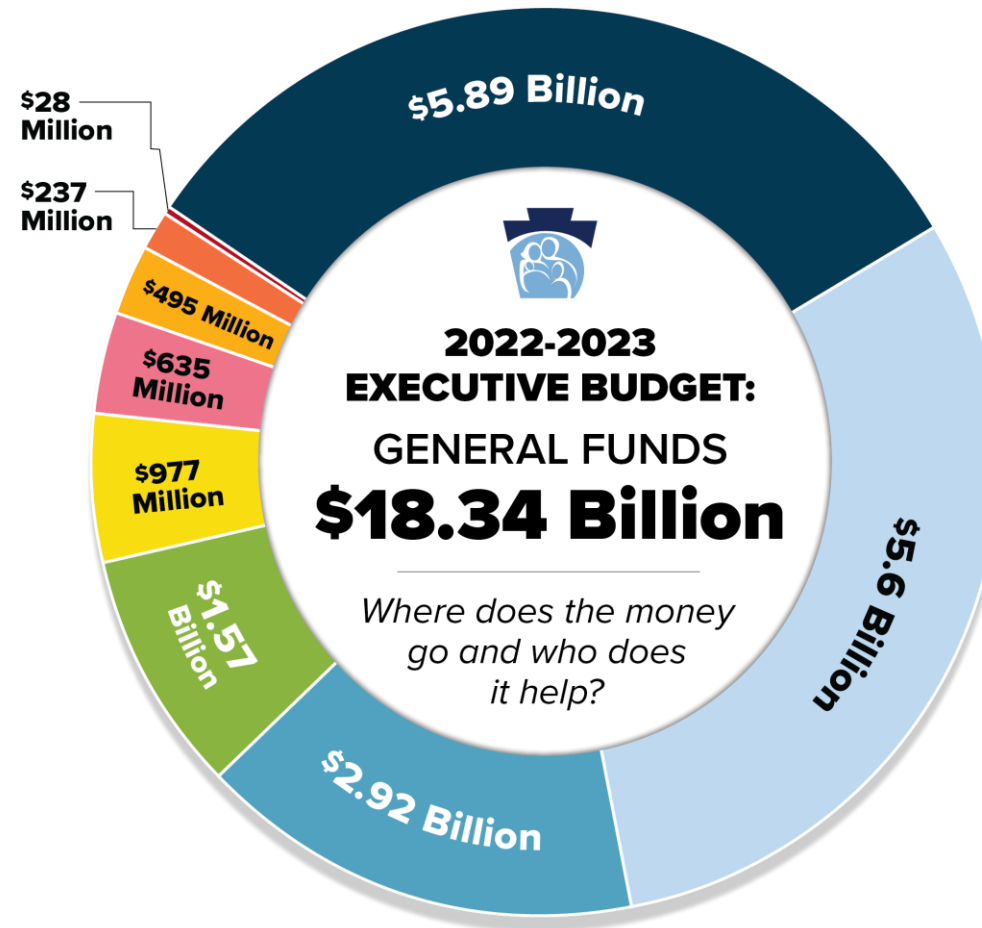
pennsylvania
DEPARTMENT OF HUMAN SERVICES

Human Services Spending OVERVIEW



The Department of Human Services Departmental spending

- Health Care
- Long-Term Living
- Intellectual Disability/
Autism Services
- Children, Youth & Families
- Mental Health &
Substance Abuse Services
- Administration
- Early Education & Learning
- Other
- Financial Supports



2022-23 INITIATIVES

February 2022



Governor Tom Wolf's 2022-2023 Budget

- **Investing in Pennsylvania's Economic Future**
- **Advancing Quality Education & Investing in Our Kids**
- **Expanding Access to Life-Enriching Services and Care**
- **Promoting Good Health for All Pennsylvanians**
- **Protecting Vulnerable Pennsylvanians**

Investing in Pennsylvania's Economic Future

- **Increasing Pennsylvania's Minimum Wage to \$12 an Hour and Setting a Path to \$15 an Hour.** Pennsylvania's minimum wage remains among the lowest in the nation. Twenty-five states increased their minimum wage in 2022, while Pennsylvania's still has not moved since 2009. Governor Wolf's 2022-23 Budget proposes moving Pennsylvania to a \$12 minimum wage effective July 1, 2022, with a path to get to \$15 on July 1, 2028.

Increasing the minimum wage is an overdue investment in Pennsylvania's economic recovery. An increased minimum wage expands purchasing power and allows workers to reinvest in their own communities and local businesses. An increase to \$12 would give 765,000 workers – more than 13 percent of our workforce – an overdue raise.

Hardworking Pennsylvanians working lower wage jobs should not struggle with basic needs because of low wages. As we continue to experience a workforce crisis for essential fields, raising the minimum wage will help Pennsylvanians who fill critical roles providing care and education for our children and care and support for our aging parents and loved ones with disabilities or special needs.

These dedicated professionals spend their lives in service to others. We must keep these fields appealing by paying workers a life-sustaining wage.

Initiatives

Advancing Quality Early Childhood Education & Investing in Our Kids

- **\$77.7 million** in federal funds to support increased Child Care Works base rates to support equitable access to quality child care and early childhood education for all children and families in our child care system. In March 2021, the Wolf Administration raised base rates from the 25th percentile to the 40th percentile, and in October, funding from the American Rescue Plan Act was used to bring rates to the 60th percentile – closer to the federal government’s recommendation of 75. This investment will help sustain increased rates for Child Care Works providers.
- **\$15 million** increase in state funds with an additional \$8 million in federal funds is proposed to implement additional evidence-based home visiting and family support services to over 3,800 more families across the commonwealth.
- **\$1.2 million** to implement postpartum depression as an eligible tracking category for early identification of children in need of Early Intervention services, which will improve well-being and health outcomes for infants and their families.

Expanding Access to Life-Enriching Services and Care

- **\$18.8 million** to remove more than 830 Pennsylvanians with an intellectual disability or autism from the emergency and consolidated waiver waitlists, continuing the Wolf Administration's significant investments in lowering the ID Waiting List and reducing the time individuals and families must wait for full services.
- **\$1.25 million** to move 20 Pennsylvanians who need high levels of care from state institutions and into community settings through the Community Hospital Integration Projects Program.
- **\$7.19 million** to establish a unit at Warren State Hospital with nursing home level-of-care beds able to support people with past Corrections involvement who have behavioral health needs, as these individuals are often difficult to place in an appropriate care setting.
- **\$1.13 million** to expand capacity at state-operated secure youth development facilities, which are currently operating with a waiting list.

Promoting Good Health & Wellbeing for All Pennsylvanians

- **\$36.6 million** to expand funding that supports county-level mental health services, investing in Pennsylvania's behavioral health infrastructure so it is equipped to assist those looking for help.
- **\$14.3 million** to increase minimum Supplemental Nutrition Assistance Program (SNAP) for seniors and people with disabilities from \$20 to \$35, helping them avoid going hungry and mitigating potential health risks that can come with poor nutrition and food insecurity.

Protecting Vulnerable Pennsylvanians

- **\$91.25 million** to support enhanced staffing hours at skilled nursing facilities as part of the Medical Assistance rates beginning January 2023. An increase in staffing hours will improve quality of care and quality of life for Pennsylvanians who rely on these facilities for daily care.
- **\$50 million** to increase supplemental funds that assist personal care homes serving primarily SSI recipients. This supplement has not been increased since 2006, and facilities have very limited resources to maintain their physical plant and invest in infection control resources. Increasing the supplement will help facilities support better care and facility quality
- **\$300,000** to establish a Regional Crisis Response team able to assist with emergencies that require 24/7 support, monitoring, or investigation at facilities overseen by the Office of Children, Youth, and Families.
- **\$1.8 million** to expand availability of Court-Appointed Special Advocates that assist children who have been abused or neglected and are involved with a dependency court proceeding.

Thank you for joining us!
